

A Big Thank You!

We wanted to send out a huge thank you to all the people that came to our work day this past Saturday! It was wonderful meeting some new ESP members and reconnecting with some old friends in the program. A very special thanks to Jo and Tom who very generously donated some AMAZING carts, shovels, and rakes and also came to the work day to shovel and haul sand with us. And although we missed Scott, we couldn't have done it without his supplies! We ended up being able to completely clean out and refill our shorebird habitat and our white pelican cage. It was hard work but we had a blast, you guys are great!



(And remember....if anyone is bored we have plenty more cages and lots of fill left....)



WildLife Holiday Tree



Once again, you can celebrate the holiday season with our annual online WildLife Holiday Tree dedicated you and your loved ones. Christmas comes early at FWMA, so this special gift-giving opportunity will be revealed on Sunday, December 17th.

If you would like to help FWMA while giving a unique gift to a friend or relative, just follow the online donation instructions below or use the attached donation form. Donations can be made In Memory or In Honor of your loved one and a holiday greeting (on your behalf) will be sent by FWMA to the person of your choice.

THE TREE ADORNED WITH DEDICATIONS AND REMEMBRANCES WILL BE REVEALED ON OUR WEBSITE ON DECEMBER 17TH

To submit an online donation:

Visit our website at www.FWMA.org/wildlife-holiday-tree.com to make a secure online charitable donation using your credit card or PayPal account. *Want to honor someone special with your donation?* After submitting your payment information, a box appears where you can enter special instructions. For your contribution to be recognized as either In Honor or In Memory of someone, please enter ALL of the following information:

- Name of individual to be recognized,
- whether it is In Memory or In Honor of,
- their email address (for a greeting)
- and who the donation is from.

Upon receipt of your donation, an ornament or gift will be added to the WildLife Holiday Tree reflecting your support. The tree will be revealed on December 17th. In addition, the special person you have honored will receive a holiday greeting via email or regular mail, whichever you choose.

Make your charitable contribution even more special: for a gift of \$1,000 you can dedicate a star at the top of the WildLife Holiday Tree.

Or you can submit your donation by mail:

Complete the donation form below for each request

Make checks payable to: FWMA

Mailing address:
198 Edgar Poole Rd, Crawfordville FL 32327

Please note: DONATIONS RECEIVED AFTER DECEMBER 16TH CANNOT BE GUARANTEED either a website display or a holiday greeting delivery in time for Christmas day.

WildLife Holiday Tree – FWMA Donation Form	
In Honor / Memory of (circle one):	In Honor / Memory of (circle one):
Name _____	Name _____
Please send a card to:	
Name _____	Name _____
Email _____ <small>(saves FWMA postage cost)</small>	OR Email _____ <small>(saves FWMA postage cost)</small>
Address _____	Address _____
City _____ ST _____ Zip _____	City _____ ST _____ Zip _____
Donation made by _____	Donation made by _____
<input type="checkbox"/> Check here if you wish to remain anonymous.	<input type="checkbox"/> Check here if you wish to remain anonymous.



Florida Wild Mammal Association is a nonprofit organization dedicated to the rescue, rehabilitation and release of sick, injured and orphaned wild animals. FWMA is equally committed to public education about wildlife issues.

198 Edgar Poole Road, Crawfordville, FL 32327 / 850.363.2351 / www.FWMA.org

Florida Wild Mammal Association
Wildlife rescue since 1994

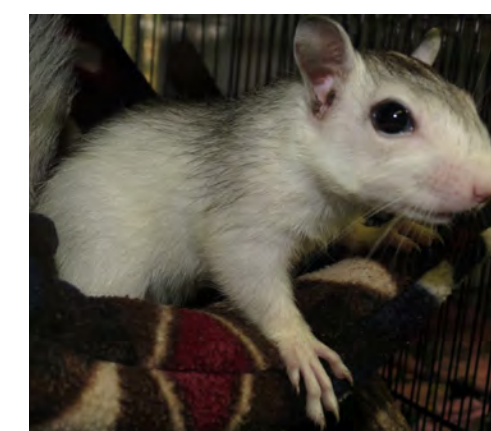
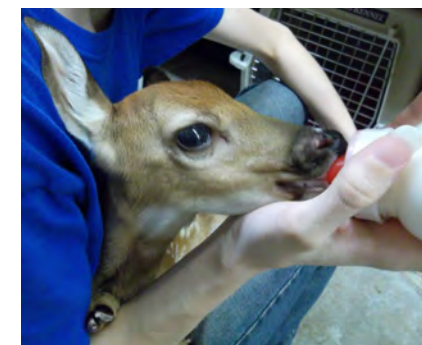


News at the Center

It has been a very busy summer with two very good scares from approaching hurricanes but thank goodness, we were luckily spared the brunt of both storms. Although they did manage to leave some debris clean up, many orphaned squirrels, and some interesting sea birds not normally seen in our area, we were quite lucky to not have more damage. Over the past few weeks the intake of babies has finally slowed down. The weather has been warm so critters

have continued to multiply. We have provided care for over 960 patients so far and there are about 120 animals still at the facility and approximately 40 still in foster care. It's currently fawn season, squirrel season has finally slowed down, and we are now receiving an assortment of migrating birds. Fall has finally arrived soon to be followed by those cold days of winter and some very exciting news that you can read about below!

Still In Care



Upcoming Event

Join us for Christmas for the Critters!

A family friendly event

When: November 19th from 1pm - 5:30pm

Where: Wakulla Senior Citizens Center
33 Michael Drive, Crawfordville, FL

Each year the creative volunteers at FWMA decorate native red cedar trees and sell them at local venues to raise money to care for injured local wildlife. This year we would love you to join us! On November 19th at the Wakulla Senior Citizens Center we will be decorating our trees and also offering a chance for you to decorate your own! We will be providing all the supplies needed for you to create your Peerfect tree. These unique trees make great Christmas gifts for friends and relatives and because they are native they can be planted after the holidays to live on and provide a natural habitat for our native wildlife. For those of you that are too busy to make your own creation but would still like a tree there will be many available to purchase that are splendidly decorated by one of FWMA Christmas elves for just a \$25 donation.

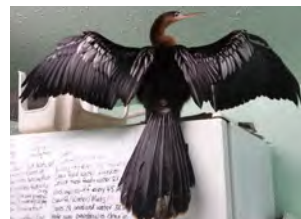
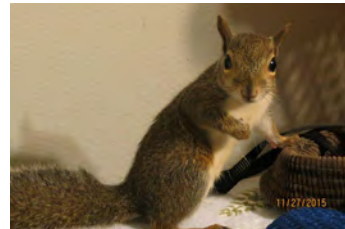
In addition, we will also be holding a Silent Auction so you can get a jump on Black Friday! The Silent Auction will run from 2 pm-5 pm and there are some great items up for bid. This is a great

opportunity to pick up some fabulous Christmas gifts that include items like Sea World tickets, Disney tickets, artwork, and even a signed electric guitar by Trace Adkins. We will also have FWMA t-shirts and gourd houses available at the event. The kids will have fun too! Santa & Mrs. Claus will make their first appearance of the season and will be at the event from 2 pm - 4 pm. Children will also enjoy complimentary face decorating, rock painting, cookies, and hot cocoa. Please come join us for this wonderful celebration at this special time of year! It's going to be lots

of fun while raising funds for a great cause.



Success Stories



Please take any injured or orphaned deer to: St. Francis Wildlife Sanctuary, (850) 627-2291. Goosecreek, (850) 545-3491. Deer can be dropped off at Allied Emergency at 2324 Centerville Road in Tallahassee.

Exciting News!

We have signed a contract to purchase 20 acres of land in Wakulla County! As you all know this has been a long-time dream. The actual purchase will not take place until it passes rezoning applications through the County but we wanted to share the news and ask for all our supporters to send up those positive thoughts and prayers and hopefully FWMA will have its new home for 2018. It will be a very busy year next year and we will be counting on your help to bring this dream to a reality!



The Yard Sale was a Huge Success!

A huge thank you to everyone that donated items, came out to visit and buy items, and helped during the yard sale in October. Thanks to all your support FWMA was able

to raise over \$1000 for the Center. The next yard sale is in March so mark your calendar and watch for updates on our Facebook page.

Education Corner

Jessica accompanied by Doofy and Terri with Moonlight have been kept very busy this year and have attended lots of outreach programs from schools to festivals. In addition to our outreach programs we would like to thank all the students who participated in our in-house programs and volunteered their time and talents during baby season our busiest time of year. Thank you, we could not have done it without you!



Pelican Update

It has been a busy year for us with pelicans. It started out at the beginning of the year with groups of young pelicans that had been purposely injured and were brought in by good Samaritans with the most horrendous wing injuries. Then over the summer we received two near misses from hurricanes Irma and Nate that arrived just after this year's birds had fledged and many pelicans were injured during the rough weather conditions. Many of these youngsters have made a full recovery and were able to be released back to the wild but unfortunately many have suffered injuries that have left them

permanently disabled but well enough to have a good quality of life. You may wonder what happens to the animals that can't be returned to the wild. FWMA makes every effort to find suitable permitted placement where these animals will be used for education as exhibit animals in zoos, nature centers, and aquariums. Only the best places are chosen for our critters. We would like to thank Zoo Miami, Flamingo Gardens, and Columbus Zoo for providing homes for some of our pelicans and other birds. We are still seeking great locations for the ones who are still here.



facebook

WOW!

Our Facebook page has over 3,500 likes – THANK YOU! Find us on Facebook at: Florida Wild Mammal Association